



# Village Estates

Independent Estate Agents & Mortgage Advisors



*Moodiesburn*

*10 Northcroft Road*

*G69 0DW*

# 2 Bedroomed Terrace Villa

Lounge • Kitchen  
2 Bedrooms • Bathroom  
Gardens

Village Estates are delighted to welcome to the market this modern, seldom available 2 bedroomed mid terrace villa in the sought after area of Moodiesburn. Internally the property comprises of an welcoming hallway leading to a fabulous size lounge with space for dining, the lounge leads to a stunning fitted kitchen with a generous range of base and wall mounted units with integrated oven, hob and hood. The kitchen leads to a rear vestibule which gives access to both a large storage cupboard and the rear garden. The upper level accommodates 2 generous size double bedrooms with the master boasting excellent storage space. The accommodation is complete with a modern fully tiled family bathroom comprising of a 3 piece white suite with electric shower over bath and side screen. The property benefits from a system of gas central heating and is fully double glazed. Externally the property sits in a beautiful plot with well maintained gardens to the front and rear. Viewing is essential to fully appreciate the accommodation on offer on this excellent family home which is in truly walk in condition.

## Lower Level

- Hallway
- Lounge 15'06" x 13'02"
- Kitchen 13'02" x 6'07"

## Upper Level

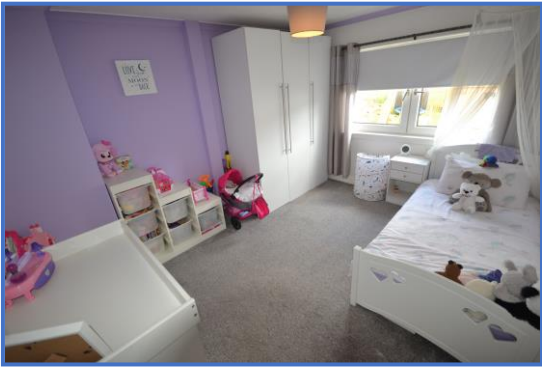
- Bedroom No. 1 11'03" x 10'02"
- Bedroom No. 2 12'03" x 10'00"
- Bathroom

These particulars are believed to be correct and do not form part of any contract. Measurements have been taken using a sonic tape and may be subject to a small margin of error. Electrical/Gas fittings have not been tested and are assumed to be in working order.

Photographs are included for information purposes only and it should not be assumed that any item is included in the purchase price of the property.

Ref. No. VEC21.2984









## **Selling Your Property !!**

**Contact us Now for a Free Valuation - We Offer a Full Sales & Marketing Package for a Very Competitive Fee**

## **Mortgage**

**Village Estates Mortgages offers a full range of Mortgage and Re-Mortgage facilities**

**Home Reports, Surveys, Solicitors can also be arranged**

### **Office Opening Hours**

**9am – 5.30pm Monday – Friday**

**10am – 2pm Saturday (Cumbernauld Only)**

**Please contact either of our Branch Tel. Nos. during Saturday opening times for all enquiries**

**2 The Wynd, The Village, CUMBERNAULD**

**Tel: 01236 636101**

**Zoopla.co.uk**

**148-150 Cumbernauld Road, MUIRHEAD**

**Tel. 0141 779 9024**

 **rightmove.co.uk**

**www.VE-Estates.com**

**s1homes.com**